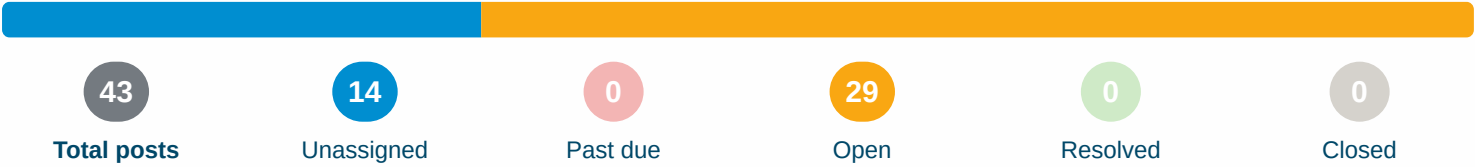




Food Lion #2560 Electrical Survey (Awaiting utility data, full report with Arc Flash Study to follow), 4-25-19 4/2/2019 - 4/29/2019



Engineer of Record shall
Address in all electrical items
Listed in Arc Flash Study
Except those noted for
maintenance.

Posts

 **Unassigned**

Post 25 - REPORT TO BE REVISED - Awaiting utility data to complete Arc Flash Study.



Dave Beretsky - Crescent Construction Services

To: Crescent Construction Services

4/29/2019, 11:39 AM EDT

Location  *Entire Store*

 Open - Deficiency**Post 50 - Hot Termination / Breaker To Bus Finger - PB # 24****Rob Stubbs** - Crescent Construction Services

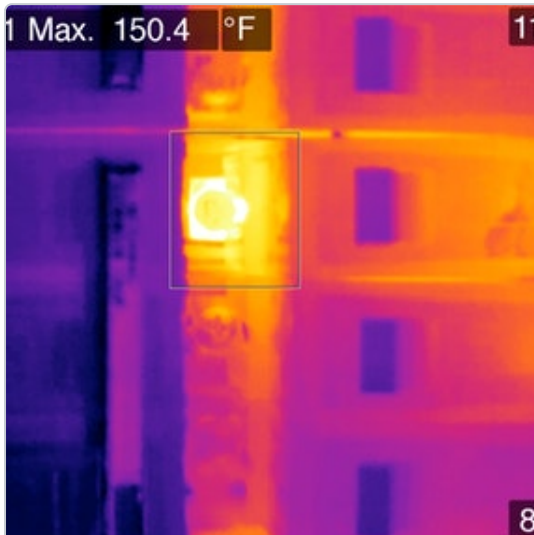
4/29/2019, 11:39 AM EDT

To: Assignees, Crescent Construction Services

20 amp breaker, 10 AWG, labeled "B9 Fans", 10 amp load, room temp 77F. IR Image: 4973. Screw shows signs of excessive heat and appears to be not fully seated. No attempt was made to tighten screw. Replace breaker and bus termination screw, ensure no damage to bus finger.

Location  *Mechanical Room*Assigned To   **Electrical Contractor**

No due date

OpenAll Media  3 photos



Open - Deficiency

Post 36 - Bad Breaker - B # 10**Rob Stubbs** - Crescent Construction Services

4/29/2019, 11:39 AM EDT

To: Assignees, Crescent Construction Services

20 amp breaker, 10 AWG, labeled "D/B Lighting", 11 amp load, room temp 70F. IR image: 4971. Replace with "SWD" or "HID" type breaker as this breaker is used as a switch.

Location **Deli Prep**

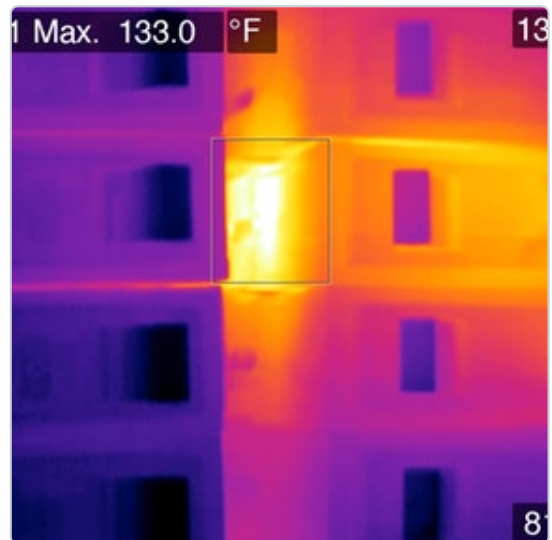
Assigned To

**Electrical Contractor**

No due date

Open

All Media 2 photos



 Open - Deficiency**Post 51 - MDP3 - Panel PC - Undersized Rating Plug****Rob Stubbs** - Crescent Construction Services

4/29/2019, 11:39 AM EDT

To: Assignees, Crescent Construction Services

250 amp breaker currently has a 150 amp rating plug in use. Upgrade to 225 amp rating plug to match panel bus amperage and 4/0 AWG Cu conductor.

Location  **Mechanical Room**Assigned To  **Electrical Contractor**

No due date

OpenAll Media  **2 photos**

 **Open - Deficiency****Post 49 - Oversized Breaker - LB # 16****Rob Stubbs** - Crescent Construction Services

4/29/2019, 11:38 AM EDT

To: Assignees, Crescent Construction Services

30 amp breaker, 12 AWG, labeled "Corridor Receptacle", currently no load. Repair, downsize breaker to 20 amps.

Location  **Mechanical Room**Assigned To   **Electrical Contractor**

No due date

OpenAll Media  **1 photo**



Open - Deficiency

Post 34 - Code Violation / Improper Equipment - D # 21**Rob Stubbs** - Crescent Construction Services

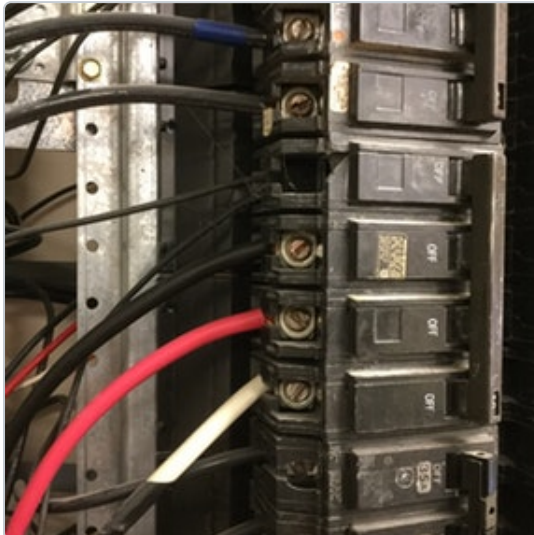
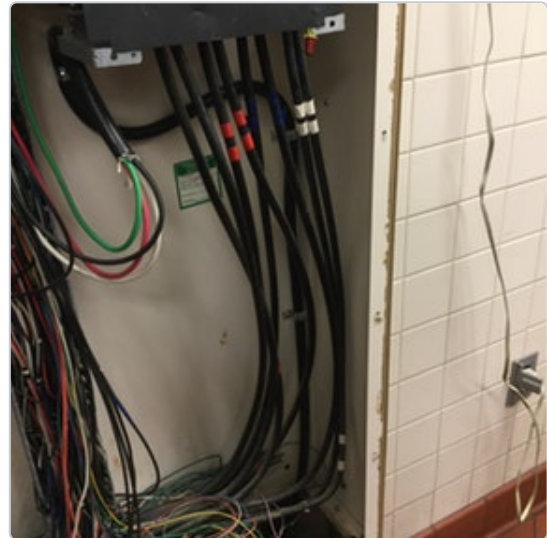
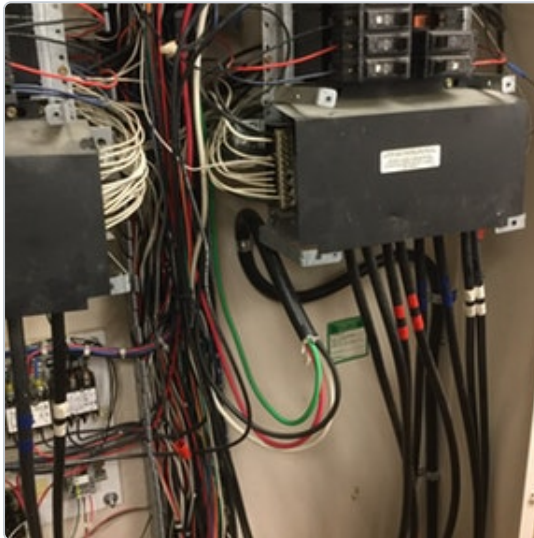
4/29/2019, 11:38 AM EDT

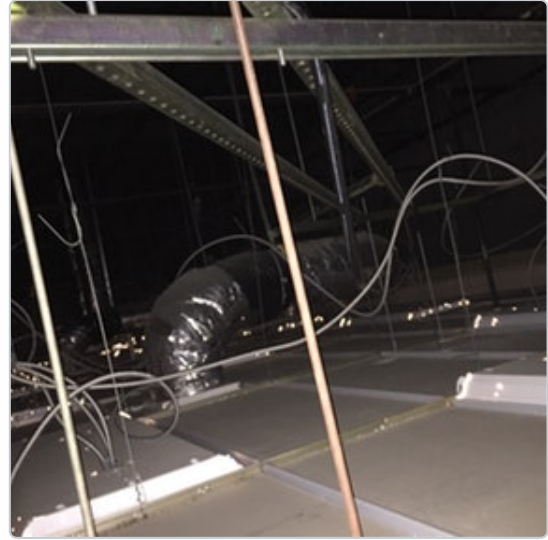
To: Assignees, Crescent Construction Services

Bottom leg of 50 amp 3-pole breaker with shunt trip, labeled "Fryer", 6, 6, 6 AWG cord drop cable, has white conductor wrapped with black tape terminated on breaker. Cord drop runs across uni-struts above drop ceiling to rear end of deli to fryer. Replace with code compliant conduit and conductors.

Location  **Deli Prep**Assigned To **Electrical Contractor**

No due date

OpenAll Media  6 photos



 Open - Deficiency**Post 37 - OA starter cover missing. Replace****Ryan Lasker** - Crescent Construction Services

4/29/2019, 11:38 AM EDT

To: Assignees, Crescent Construction Services

Location  *Above Meat Cooler*Assigned To   **Electrical Contractor**

No due date

OpenAll Media  2 photos**Maintenance**



Open - Deficiency

Post 10 - Emergency Lighting**Dave Beretsky - Crescent Construction Services**

4/29/2019, 11:38 AM EDT

To: Assignees, Crescent Construction Services

Fed from LB 40, 42. Lights in produce prep were confirmed to not illuminate when above circuits were de-energized. Repair, all emergency lighting shall be fed from a branch circuit panelboard, on the line side of any energy management controls, and shall be labeled / scheduled as such.

Location  *Entire Store*Assigned To **Electrical Contractor**

No due date

OpenAll Media  1 photo

 Open - Deficiency**Post 20 - Install Egress Lighting****Dave Beretsky - Crescent Construction Services**

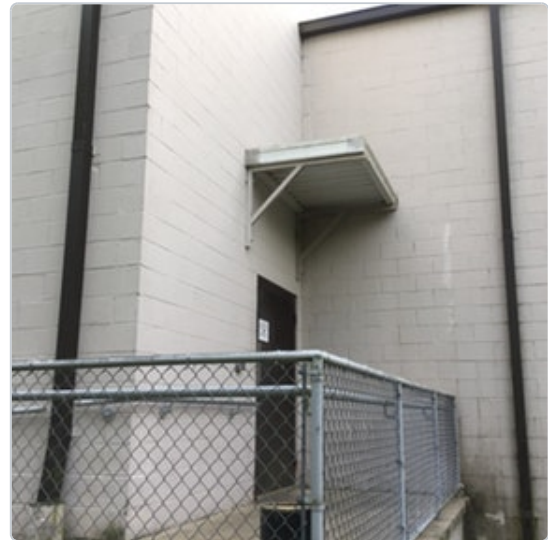
4/29/2019, 11:38 AM EDT

To: Assignees, Crescent Construction Services

Install fixtures on the following doors: Right side (front door), left side, DSD, both front entrances. Work with owner on fixture selection.

Location  *Outside*Assigned To 

 Electrical Engineering	No due date	
 Owner	No due date	
 Electrical Contractor	No due date	

All Media  5 photos





Open - Deficiency

Post 13 - Double Terminations**Dave Beretsky - Crescent Construction Services**

4/29/2019, 11:38 AM EDT

To: Assignees, Crescent Construction Services

The following panels have double terminations:

OW; Circuits 5, 6, 11, 13, 19.

B; Circuits 38, 42.

PC; Circuit 9.

Repair, branch circuit panelboards are not to be used as junction boxes, remove all additional wiring, single terminations only.

Location

Entire Store

Assigned To



Electrical Contractor

No due date

Open

 **Open - Deficiency****Post 8 - Remove LiteMiser****Dave Beretsky - Crescent Construction Services**

4/29/2019, 11:38 AM EDT

To: Assignees, Crescent Construction Services

TURN POWER OFF TO PANEL LA; Re-terminate the main feeders for / to Panel LA as required, Remove LiteMiser Panel.

Location  **Mechanical Room**Assigned To  **Electrical Contractor**

No due date

OpenAll Media  **1 photo**



Open - Deficiency

Post 54 - Refrigeration Circuit Sizing**Dave Beretsky - Crescent Construction Services**

4/29/2019, 11:38 AM EDT

To: Assignees, Crescent Construction Services

Rack A: 400 amp breaker, 2 sets 3/0 AWG Cu.

Rack B: 300 amp breaker, 2 sets 1/0 AWG Cu.

Cond A: 40 amp breaker, 8 AWG Cu.

Cond B: 30 amp breaker, 10 AWG Cu.

CU-1: 300 amp breaker, 4/0 AWG Cu.

Engineer to size main breakers / conductors per MOPD / MCA requirements in revised refrigeration summary. See Disconnect Inventory for relative data.

Location Entire Store

Assigned To



Electrical Engineering

No due date

Open

All Media 5 photos







Open - Deficiency

Post 12 - Existing Neutrals, Case Lighting & Fans**Dave Beretsky - Crescent Construction Services**

4/29/2019, 11:37 AM EDT

To: Assignees, Crescent Construction Services

Existing refrigeration conduits in mechanical room suggest lights and fans are sharing neutrals. This only applies to new and relocated case work - lights and fans are to have dedicated neutrals.

Location *Mechanical Room*

Assigned To



Electrical Engineering

No due date

Open

All Media 1 photo



 **Open - Deficiency**

Post 52 - Safety Issue - Trip Hazard



Rob Stubbs - Crescent Construction Services

4/29/2019, 11:37 AM EDT

To: Assignees, Crescent Construction Services

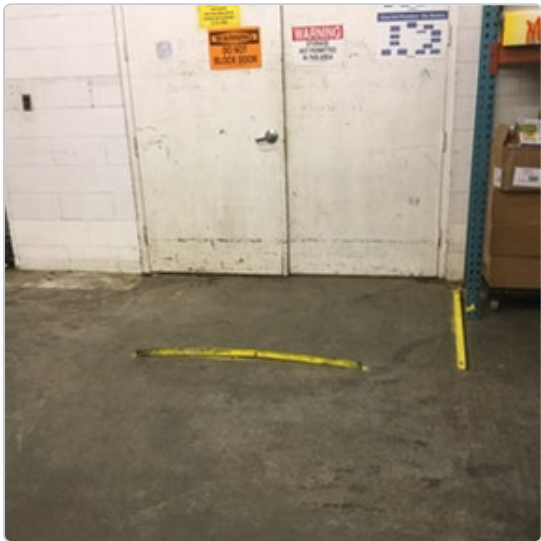
Angle iron bolted to floor in front of mechanical rooms to keep pallets out. Remove and install bollards.

Location  **Storage Area**

Assigned To 

 General Contractor	No due date	Open
 Owner	No due date	Open

All Media  **1 photo**



 Open - Deficiency

Post 29 - Safety Issue - Case Door



Rob Stubbs - Crescent Construction Services

4/29/2019, 11:37 AM EDT

To: Assignees, Crescent Construction Services

Aisle 12, right side, 2nd door from rear. Case temp: -4F. labeled B4. IR image: 4968.
Issue with door heaters/glass.

Location  Sales Floor

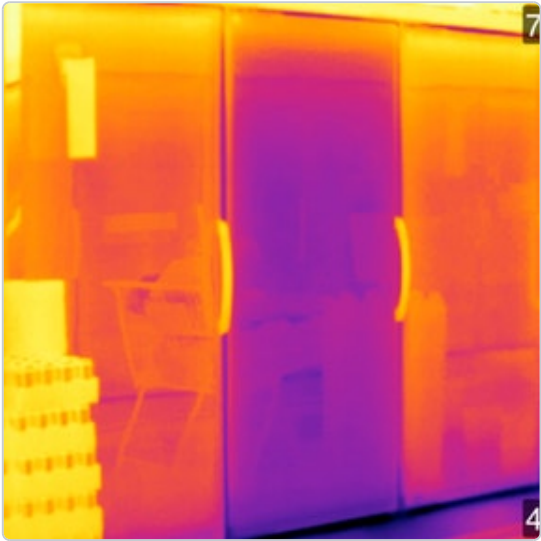
Assigned To 

 Owner

No due date

Open

All Media  2 photos



Maintenance

 Open - Deficiency

Post 30 - Safety Issue - Case Door



Rob Stubbs - Crescent Construction Services

4/29/2019, 11:37 AM EDT

To: Assignees, Crescent Construction Services

Aisle 13, right side, 3rd door from rear. Case temp: 1F. labeled B6. IR image: 4969.
Issue with door heaters/glass.

Location  Sales Floor

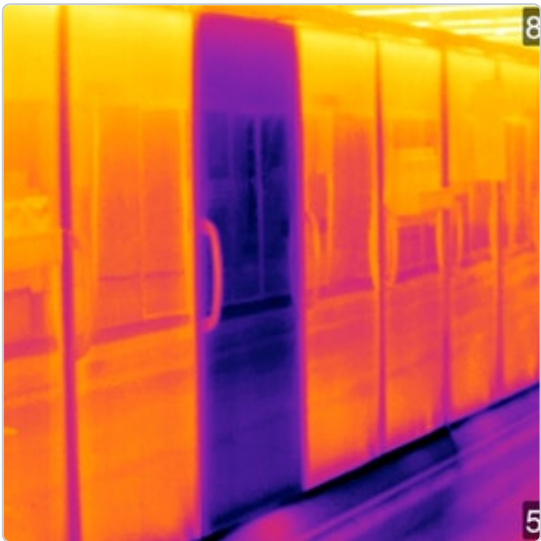
Assigned To 

 Owner

No due date

Open

All Media  2 photos



Maintenance

 Open - Deficiency**Post 31 - Safety Issue - Case Door****Rob Stubbs** - Crescent Construction Services

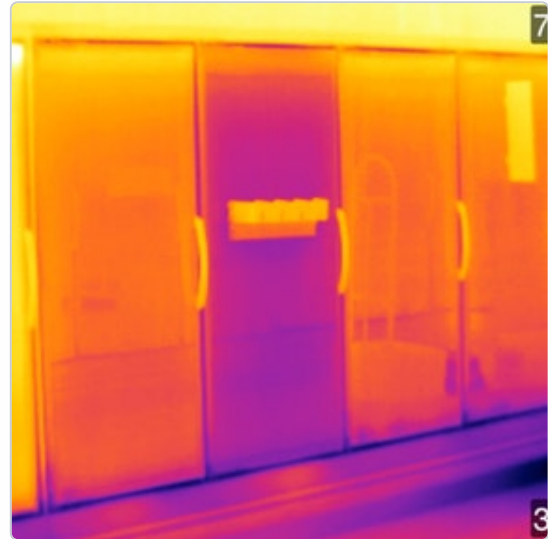
4/29/2019, 11:37 AM EDT

To: Assignees, Crescent Construction Services

Aisle 13, left side, 10th door from front. Case temp: -4F. labeled B13. IR image: 4970. Issue with door heaters/glass.

Location  Sales FloorAssigned To   Owner

No due date

OpenAll Media  2 photos**Maintenance**

 **Unassigned**

Post 9 - Canopy Sprinkler System



Dave Beretsky - Crescent Construction Services

4/29/2019, 11:37 AM EDT

To: Crescent Construction Services

Is in place.

Location  *Front Canopy*

All Media  *2 photos*



 **Unassigned**

Post 23 - Grinder - (For Reference Only)



Dave Beretsky - Crescent Construction Services

To: Crescent Construction Services

4/29/2019, 11:36 AM EDT

Location  **Meat Prep**

All Media  **2 photos**



 **Unassigned****Post 15 - Meat Saw - (For Reference Only)****Dave Beretsky** - Crescent Construction Services

4/29/2019, 11:36 AM EDT

To: Crescent Construction Services

No longer in use.

Location  *Meat Prep*All Media  *3 photos*

 **Unassigned****Post 14 - Existing MC Cabling Home-runs****Dave Beretsky - Crescent Construction Services**

4/29/2019, 11:36 AM EDT

To: Crescent Construction Services

Existing runs are as follows: 2 in P panel enclosure, 1 in EMCC. No new MC is to be installed as a home run.

Location  **Mechanical Room**All Media  **2 photos**

 **Unassigned****Post 11 - Conduit Fittings And Support****Dave Beretsky - Crescent Construction Services**

4/29/2019, 11:36 AM EDT

To: Crescent Construction Services

Conduit is strapped, fittings are compression type. New fittings are to be compression type.

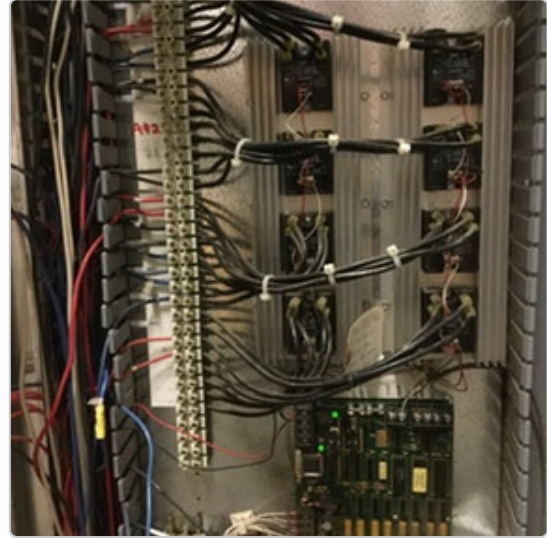
Location  **Entire Store**All Media  **2 photos**

 **Unassigned****Post 5 - SweatMiser****Dave Beretsky - Crescent Construction Services**

4/29/2019, 11:36 AM EDT

To: Crescent Construction Services

Fed from PC #42, 20 amp breaker, 12 AWG. 11 of 16 channels in use.

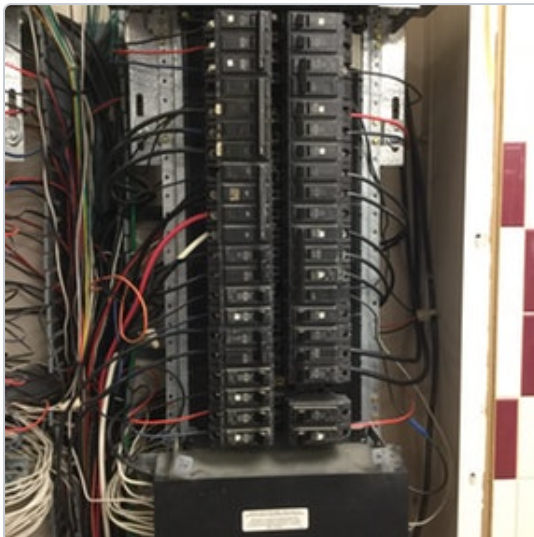
Location  *Mechanical Room*All Media  *2 photos*

 Unassigned**Post 7 - Gas Rack Oven****Dave Beretsky - Crescent Construction Services**

4/29/2019, 11:36 AM EDT

To: Crescent Construction Services

Fed from D #1, 3, 5, 15 amp breaker, 12 AWG. There does not appear to be room on deli wall at deli electrical panels for a remote mounted breaker, engineer to review alternate locations as needed. Panel D will not accommodate larger than a 100 amp breaker in circuits 1-42. If larger than 100 amp breaker is required for New Rack Oven, install as remote breaker from panel D.

Location  [Deli Prep](#)All Media  [3 photos](#)

 **Unassigned**

Post 1 - Utility Transformer



Dave Beretsky - Crescent Construction Services

4/29/2019, 11:36 AM EDT

To: Crescent Construction Services

Location  *Outside*

All Media  *1 photo*



 Unassigned

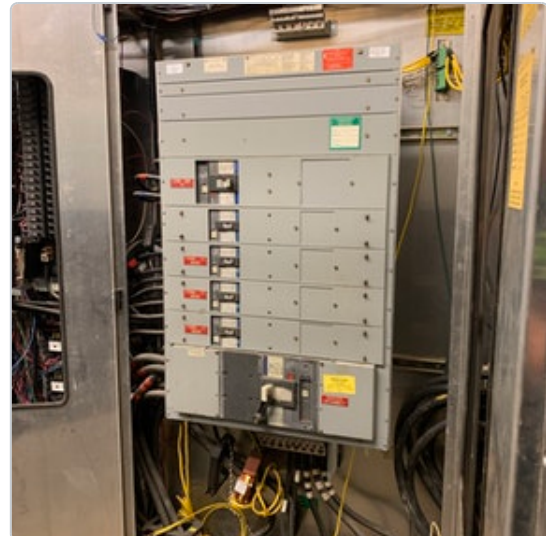
Post 46 - Panel MDP1 Data

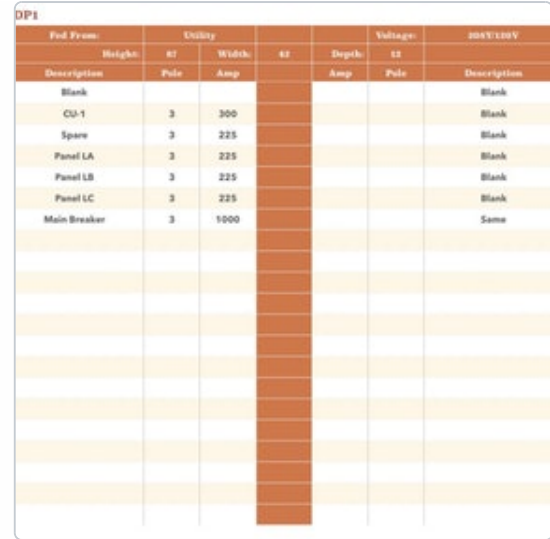


Ryan Lasker - Crescent Construction Services

4/29/2019, 11:36 AM EDT

To: Crescent Construction Services

Location  Mechanical RoomAll Media  6 photos



 Unassigned

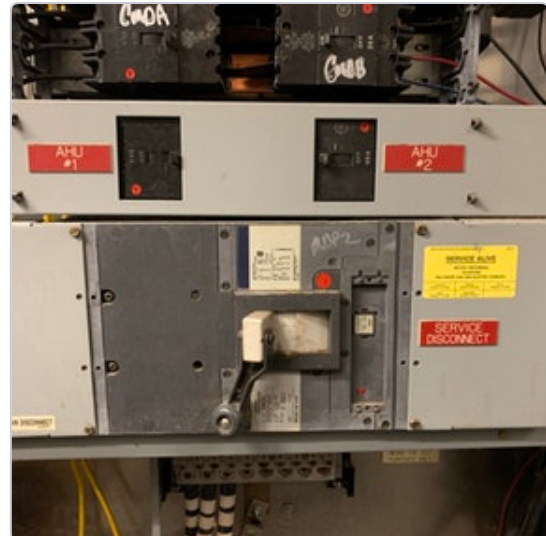
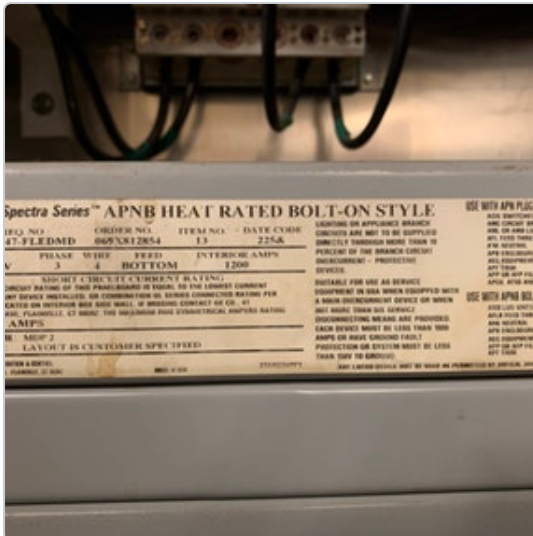
Post 47 - Panel MDP2 Data



Ryan Lasker - Crescent Construction Services

4/29/2019, 11:36 AM EDT

To: Crescent Construction Services

Location  Mechanical RoomAll Media  6 photos

[illegible]

 Unassigned

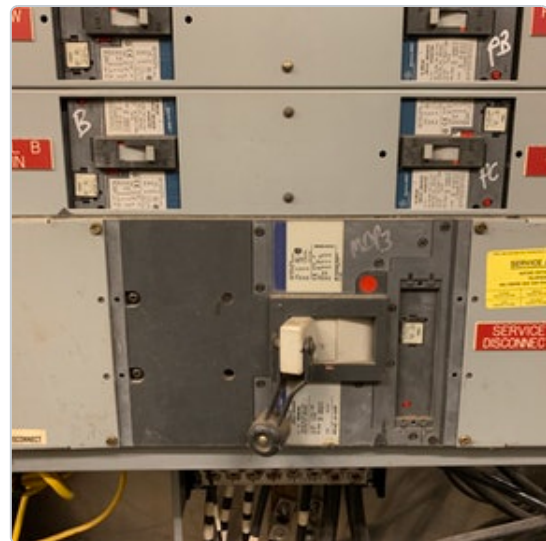
Post 48 - Panel MDP3 Data

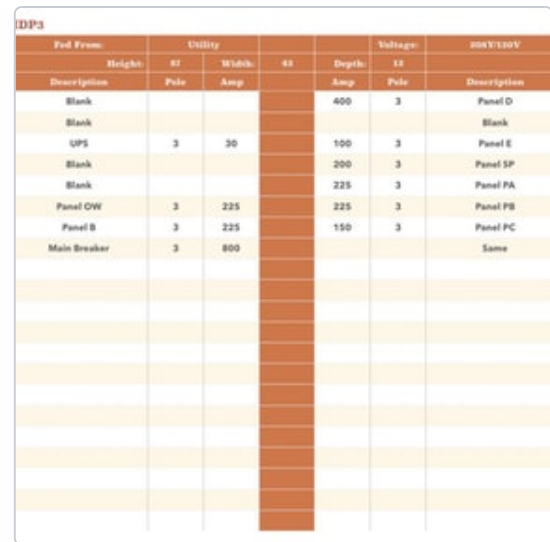


Ryan Lasker - Crescent Construction Services

4/29/2019, 11:36 AM EDT

To: Crescent Construction Services

Location  Mechanical RoomAll Media  6 photos



 **Unassigned**

Post 4 - Bus Bolt Pattern In MDP1, MDP2, MDP3



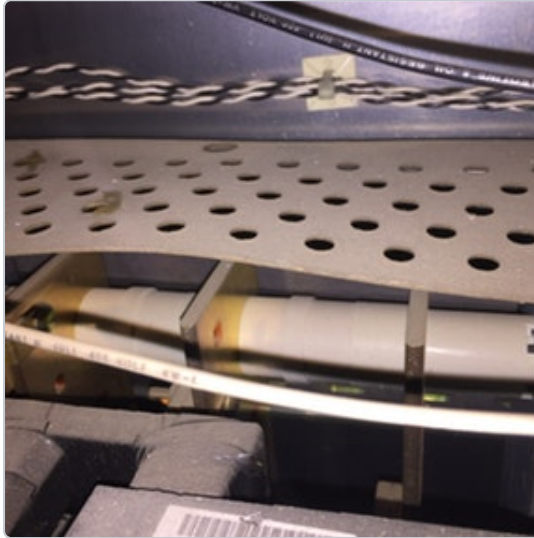
Dave Beretsky - Crescent Construction Services

To: Crescent Construction Services

4/29/2019, 11:36 AM EDT

Location  **Mechanical Room**

All Media  **1 photo**





Unassigned

Post 19 - Disconnect Inventory - (See attachment)



Dave Beretsky - Crescent Construction Services

To: Crescent Construction Services

4/29/2019, 11:36 AM EDT

Location 

Entire Store

Attachments 

[FL_2560_Disconnects.pdf \(21.1 kB\)](#)



Open - Deficiency

Post 16 - Panel Schedule Labeling**Dave Beretsky - Crescent Construction Services**

4/29/2019, 11:36 AM EDT

To: Assignees, Crescent Construction Services

All schedules are to be 100% accurate, on card stock, typed, dated, and installed in a clear pocket. EC shall go through ALL existing electrical panels to trace and verify all circuits for accuracy. Receptacles and lighting are to be labeled by area/location. Sales floor lighting circuits are to include row number. Case circuits are to reference refrigeration circuits. Spare is a breaker with no wire. Blank is an empty slot. All wired and active breakers shall be properly scheduled. Note: Wired breakers with no active load / device shall be labeled as Spare, Ending Location. Do Not remove existing panel schedules. Electronic copies of all panel schedules are required at closeout.

Location

Entire Store

Assigned To

**Electrical Contractor**

No due date

Open



Open - Deficiency

Post 42 - Panel LA Data: Schedule Incorrect



Ryan Lasker - Crescent Construction Services

4/29/2019, 11:36 AM EDT

To: Assignees, Crescent Construction Services

Location

Mechanical Room

Assigned To



Electrical Contractor

No due date

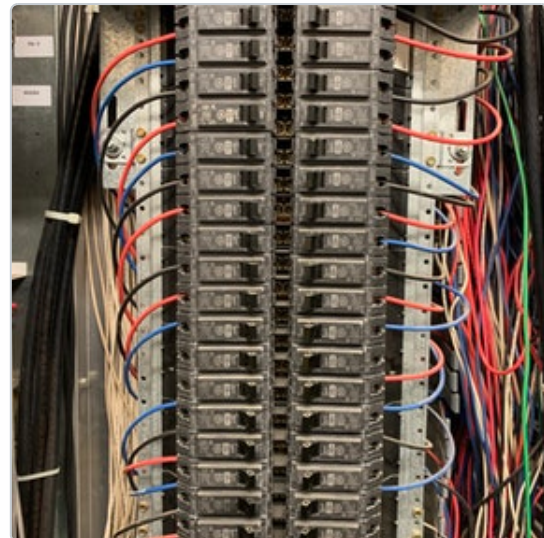
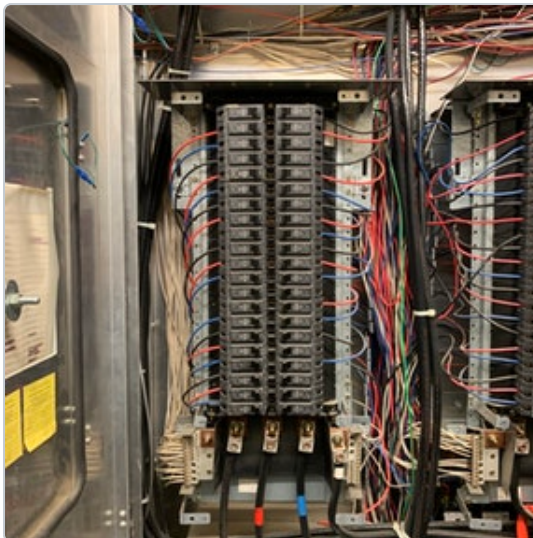
Open

All Media

4 photos

Phase Loads	A Phase	04	B Phase	06	C Phase	07	Neutral	23
Circuit	Pole	AWG	Amp		Amp	AWG	Pole	Circuit
1	1	Spare	20		20	10	1	2
3	1	10	20		20	10	1	4
5	1	10	20		20	Spare	1	6
7	1	10	20		20	10	1	8
9	1	10	20		20	10	1	10
11	1	10	20		20	10	1	12
13	1	10	20		20	10	1	14
15	1	10	20		20	10	1	16
17	1	Spare	20		20	10	1	18
19	1	10	20		20	10	1	20
21	1	10	20		20	10	1	22
23	1	10	20		20	10	1	24
25	1	Spare	20		20	Spare	1	26
27	1	Spare	20		20	10	1	28
29	1	10	20		20	10	1	30
31	1	10	20		20	10	1	32
33	1	10	20		20	Spare	1	34
35	1	10	20		20	10	1	36
37	1	10	20		20	Spare	1	38
39	1	10	20		20	Spare	1	40
41	1	10	20		20	Spare	1	42

SALES AREA LTG	3	4	SALES AREA LTG
SALES AREA LTG	5	6	SALES AREA LTG
SALES AREA LTG	7	8	SALES AREA LTG
SALES AREA LTG	9	10	SALES AREA LTG
SALES AREA LTG	11	12	SALES AREA LTG
SALES AREA LTG	13	14	SALES AREA LTG
SALES AREA LTG	15	16	SALES AREA LTG
SALES AREA LTG	17	18	SALES AREA LTG
SALES AREA LTG	19	20	SALES AREA LTG
SALES AREA LTG	21	22	SALES AREA LTG
SALES AREA LTG	23	24	SALES AREA LTG
SPARE	25	26	SPARE
SALES AREA LTG	27	28	LEFT WALL ACCENT LTS
SALES AREA LTG	29	30	SALES AREA LTG
SALES AREA LTG	31	32	SALES AREA LTG
	33	34	
	35	36	RIGHT WALL ACCENT LTS





Open - Deficiency

Post 43 - Panel LB Data: Schedule Incorrect



Ryan Lasker - Crescent Construction Services

4/29/2019, 11:35 AM EDT

To: Assignees, Crescent Construction Services

Location

Mechanical Room

Assigned To



Electrical Contractor

No due date

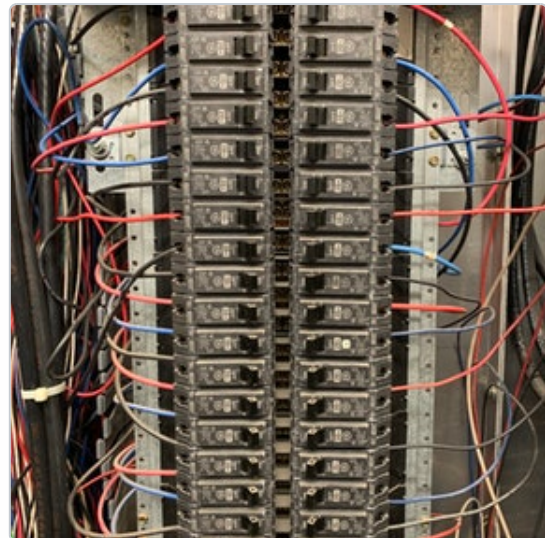
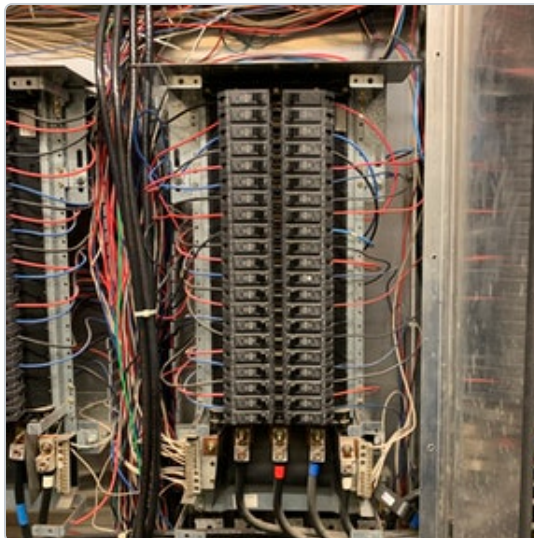
Open

All Media

4 photos

Phase Loads	A Phase	34	B Phase	20	C Phase	20	Neutral	40
Circuit	Pole	AWG	Amp		Amp	AWG	Pole	Circuit
1	1	10	20		20	10	1	2
3	1	10	20		20	10	1	4
5	1	10	20		20	10	1	6
7	1	10	20		20	10	1	8
9	1	10	20		20	10	1	10
11	1	10	20		20	12	1	12
13	1	10	20		20	12	1	14
15	1	10	20		20	12	1	16
17	1	10	20		20	10	1	18
19	1	10	20		20	12	1	20
21	1	10	20		20	10	1	22
23	1	10	20		20	12	1	24
25	1	10	20		20	Spare	1	26
27	1	10	20		20	12	1	28
29	1	10	20		20	Spare	1	30
31	1	10	20		20	12	1	32
33	1	10	20		20	Spare	1	34
35	1	10	20		20	12	1	36
37	1	10	20		20	12	1	38
39	1	10	20		20	12	1	40
41	1	10	20		20	12	1	42

RESTRM, LOUNGE, CORRIDOR LTS	3	4	MEAT PREP LTS
ISLAND PRODUCE SUSPENDED LTS	5	6	MEAT PREP LTS
ISLAND PRODUCE SUSPENDED LTS	7	8	MEAT PREP LTS
ISLAND PRODUCE SUSPENDED LTS	9	10	MEAT PREP LTS
PC TRAIN RM, JAN, MEAT STG, EQ RM LTS	11	12	LOUNGE MICROWAVE
PC TRAIN, OFFICE STG, RR & JAN RM FANS	13	14	LOUNGE RECEPT
PC TRAIN, OFFICE STG, RR & JAN RM FANS	15	16	CORRIDOR RECEPT
PC TRAIN, OFFICE STG, RR & JAN RM FANS	17	18	SPARE
DOCK CANOPY LTS	19	20	PC TRAINING RM RECEPT
FRONT CANOPY LTS	21	22	MEAT CANOPY LTS (TYPE "G")
FRONT CANOPY LTS	23	24	GROCERY STG AREA RECEPT
STORE FRONT SIGN ("EXTRA LOW")	25	26	SPARE
STORE FRONT SIGN ("PRICES")	27	28	PRODUCE PREP RECEPT
STORE FRONT SIGN ("DELIV")	29	30	SPARE
STORE FRONT SIGN ("BAK")	31	32	PRODUCE PREP WRAPPING MACHINES
STORE FRONT SIGN ("ERY")	33	34	SPARE
STORE FRONT SIGN ("YOOD")	35	36	MEAT PREP RECEPT



Open - Deficiency

Post 44 - Panel LC Data: Schedule Incorrect



Ryan Lasker - Crescent Construction Services

4/29/2019, 11:35 AM EDT

To: Assignees, Crescent Construction Services

Location Mechanical Room

Assigned To

Electrical Contractor

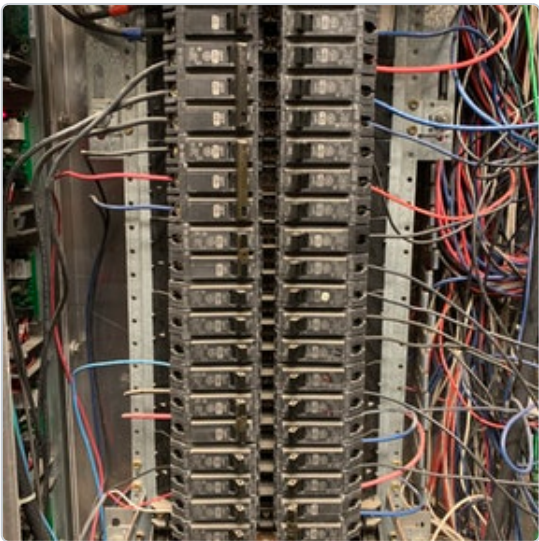
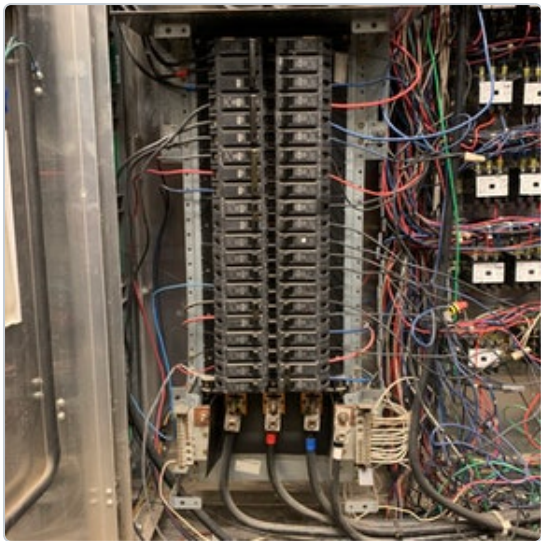
No due date

Open

All Media 4 photos

PANEL - LC								
Phase Loads	A Phase			B Phase			C Phase	
Circuit	Pole	AMP	Amp				Amp	AMP
1	3	6	60				20	12
3	3	6	60				20	Spare
5	3	6	60				20	10
7	3	8	40				20	10
9	3	8	40				20	10
11	3	8	40				15	12
13	3	10	20				15	12
15	3	10	20				15	12
17	3	10	20				20	Spare
19	2	Spare	30				15	12
21	2	Spare	30				20	12
23	1	Spare	20				20	12
25	1	Spare	20				20	12
27	1	Spare	20				20	12
29	1	12	20				20	Spare
31	2	10	20				20	12
33	2	10	20				20	12
35	1	Spare	20				20	10
37	1	16	20				20	12
39	1	16	20				30	10
41	1	16	20				30	10

4	SPARE
5	SPARE
6	SPARE
7	SPARE
8	SPARE
9	SPARE
10	SPARE
11	SPARE
12	SPARE
13	SPARE
14	SPARE
15	SPARE
16	SPARE
17	SPARE
18	SPARE
19	SPARE
20	SPARE
21	SPARE
22	SPARE
23	SPARE
24	SPARE
25	SPARE
26	SPARE
27	SPARE
28	SPARE
29	SPARE
30	SPARE
31	SPARE
32	SPARE
33	SPARE
34	SPARE
35	SPARE
36	SPARE
37	SPARE
38	SPARE



 Open - Deficiency

Post 45 - Panel E Data: Schedule Incorrect



Ryan Lasker - Crescent Construction Services

4/29/2019, 11:35 AM EDT

To: Assignees, Crescent Construction Services

Location  Mechanical Room

Assigned To 

 Electrical Contractor

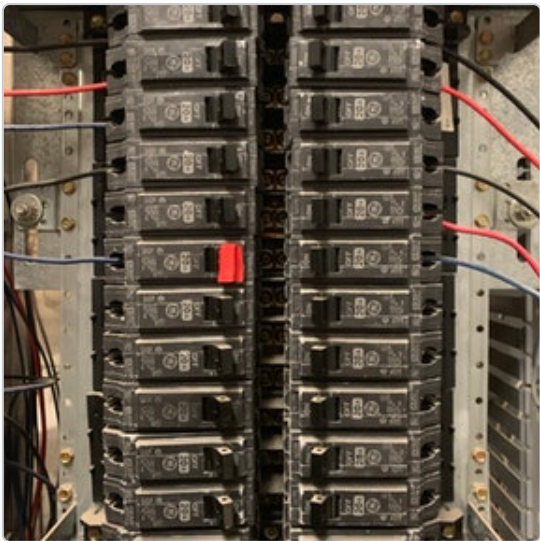
No due date

Open

All Media  4 photos

PANEL - E									
Phase Loads	A Phase		B Phase		C Phase		Neutral		
Circuit	Pole	AMG	Amp		Amp	AMG	Pole	Circuit	
1	1	12	20		20	12	1	2	
3	1	12	20		20	12	1	4	
5	1	12	20		20	Spare	1	6	
7	1	12	20		20	12	1	8	
9	1	Spare	20		20	12	1	10	
11	1	12	20		20	12	1	12	
13	1	Spare	20		20	Spare	1	14	
15	1	Spare	20		20	Spare	1	16	
17	1	Spare	20		20	Spare	1	18	
19	1	Spare	20		20	Spare	1	20	
21	1	Spare	20		20	Spare	1	22	
23	1	Spare	20		20	Spare	1	24	

TELEPHONE BACKBOARD	3	4	PRODUCE PREP SCALES
TELEPHONE BACKBOARD	5	6	SPARE
EMCO/ ECP/ ASHC	7	8	CONTROLS FOR LTS (BLUE)
SPARE	9	10	CONTROLS FOR LTS (BLACK)
FIRE ALARM	11	12	CONTROLS FOR LTS (RED)
SPARE	13	14	SPARE
SPARE	15	16	SPARE
SPARE	17	18	SPARE
SPARE	19	20	SPARE
SPARE	21	22	SPARE
SPARE	23	24	SPARE
	25	26	
	27	28	
	29	30	
	31	32	
	33	34	
	35	36	



Open - Deficiency

Post 39 - Panel PA Data: Schedule Incorrect



Ryan Lasker - Crescent Construction Services

4/29/2019, 11:35 AM EDT

To: Assignees, Crescent Construction Services

Location Mechanical Room

Assigned To



Electrical Contractor

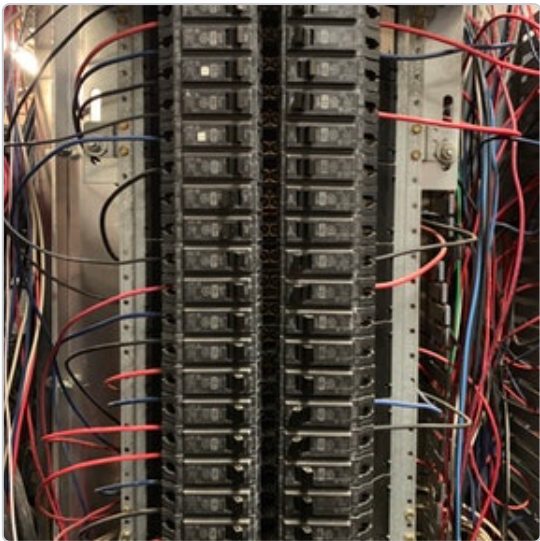
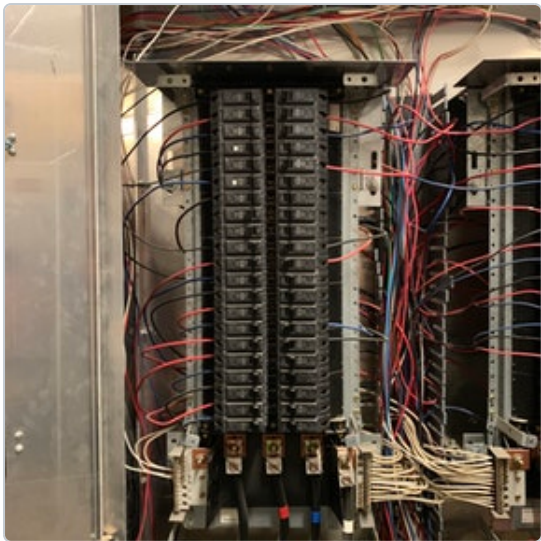
No due date

Open

All Media 4 photos

PANEL - PA									
Phase Loads	A Phase	B Phase	C Phase	Neutral	14	15	16	17	18
Circuit	Pole	AWG	Amp	Amp	AWG	Pole	Circuit		
1	1	10	15	15	10	1	2		
3	1	10	15	15	10	1	4		
5	1	10	15	15	10	1	6		
7	1	10	15	20	Spare	1	8		
9	1	12	20	15	10	1	10		
11	1	10	15	20	Spare	1	12		
13	1	10	15	20	Spare	1	14		
15	1	Spare	20	20	Spare	1	16		
17	1	Spare	20	20	Spare	1	18		
19	1	12	20	15	10	1	20		
21	1	10	20	15	10	1	22		
23	1	10	20	20	Spare	1	24		
25	1	10	15	20	Spare	1	26		
27	1	10	15	20	Spare	1	28		
29	1	10	15	15	10	1	30		
31	1	10	15	15	10	1	32		
33	1	10	15	20	Spare	1	34		
35	1	10	15	20	Spare	1	36		
37	1	10	20	20	Spare	1	38		
39	1	10	15	20	Spare	1	40		
41	1	10	15	20	Spare	1	42		

24' MBE PRODUCE LTS (A10)	3	4	28' MBE PRODUCE FAN (A9)
28' MBE FRESH MEAT FAN (A3)	5	6	24' MBE FRESH MEAT FAN (A1)
28' MBE FRESH MEAT A/S (A3)	7	8	SPARE
SPARE Fresh Pet	9	10	24' MBE FRESH MEAT LTS (A1)
24' MBE FRESH MEAT FAN (A2)	11	12	SPARE
24' MBE FRESH MEAT LTS (A2)	13	14	SPARE
SPARE	15	16	SPARE
SPARE	17	18	SPARE
SPARE	19	20	20' DS DELI MEAT FAN (A11)
8' LN MEAT PROMO FAN (B16)	21	22	20' DS DELI MEAT LTS (A11)
BIG DEFROST HEAT	23	24	SPACE
40' DSL DAIRY FAN (A18)	25	26	SPACE
40' DSL DAIRY LTS (A18)	27	28	SPACE
38' DSL DAIRY LTS (A17)	29	30	12' DSL PRODUCE LTS (A8)
38' DSL DAIRY FAN (A17)	31	32	12' DSL PRODUCE FAN (A8)
7 DR RL ICE CRM FAN (B13)	33	34	SPARE
7 DR RL ICE CRM LTS (B13)	35	36	SPARE



 Open - Deficiency**Post 40 - Panel PB Data: Schedule Incorrect****Ryan Lasker - Crescent Construction Services**

4/29/2019, 11:35 AM EDT

To: Assignees, Crescent Construction Services

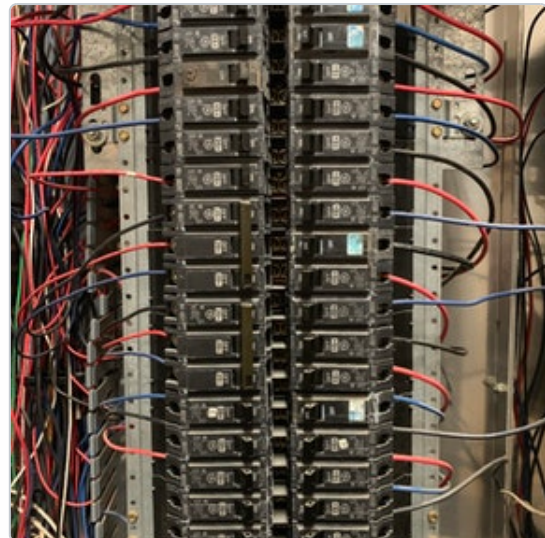
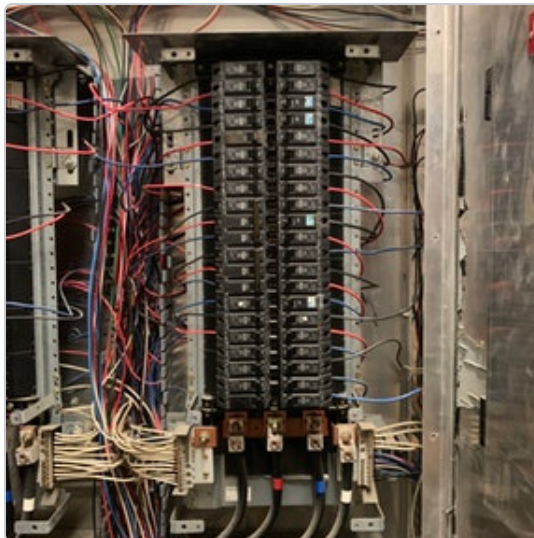
Location  **Mechanical Room**Assigned To  **Electrical Contractor**

No due date

OpenAll Media  4 photos

Phase Loads	A Phase	10	B Phase	60	C Phase	17	Neutral	30
Circuit	Pole	AWG	Amp		Amp	AWG	Pole	Circuit
1	1	10	20		15	10	1	2
3	1	10	15		15	10	1	4
5	1	10	15		20	10	1	6
7	1	10	15		20	10	1	8
9	1	10	20		15	10	1	10
11	1	10	15		15	10	1	12
13	1	Spare	20		15	10	1	14
15	1	12	20		20	10	1	16
17	3	12	20		15	10	1	18
19	3	12	20		20	8	1	20
21	3	12	20		15	10	1	22
23	3	12	20		20	10	1	24
25	3	12	20		15	10	1	26
27	3	12	20		15	10	1	28
29	1	12	20		20	10	1	30
31	1	12	20		15	10	1	32
33	1	12	20		15	10	1	34
35	1	Spare	20		15	10	1	36
37	1	Spare	20		15	10	1	38
39	1	Spare	20		15	10	1	40
41	1	Spare	15		20	10	1	42

13 DR RL FRZN FOOD FAN (B4)	3	4	13 DR RL FRZN FOOD LTS (B6)
13 DR RL FRZN FOOD LTS (B4)	5	6	13 DR RL FRZN FOOD A/S (B6)
10 DR RL FRZN FOOD LTS (B5)	7	8	10 DR RL FRZN FOOD A/S (B7)
10 DR RL FRZN FOOD A/S (B5)	9	10	10 DR RL FRZN FOOD FAN (B7)
10 DR RL FRZN FOOD FAN (B5)	11	12	10 DR RL FRZN FOOD LTS (B7)
SPARE	13	14	13 DR RL FRZN FOOD LTS (B8)
SPARE	15	16	13 DR RL FRZN FOOD A/S (B8)
	17	18	13 DR RL FRZN FOOD FAN (B8)
MECH RM EXH FAN (EF-1)	19	20	15 DR RL FRZN FOOD A/S (B9)
	21	22	15 DR RL FRZN FOOD LTS (B9)
	23	24	15 DR RL FRZN FOOD FAN (B9)
MECH RM SUPPLY FAN (SF-1)	25	26	11 DR RL FRZN FOOD FAN (B10)
	27	28	11 DR RL FRZN FOOD LTS (B10)
PROMO RECEIPT	29	30	11 DR RL FRZN FOOD A/S (B10)
COFFEE GRINDER	31	32	4 DR RL FRZN MEAT FAN (B11)
PROMO RECEIPT	33	34	4 DR RL FRZN MEAT LTS (B11)
SPARE	35	36	4 DR RL FRZN MEAT A/S (B11)



 Open - Deficiency**Post 41 - Panel PC Data: Schedule Incorrect****Ryan Lasker - Crescent Construction Services**

4/29/2019, 11:35 AM EDT

To: Assignees, Crescent Construction Services

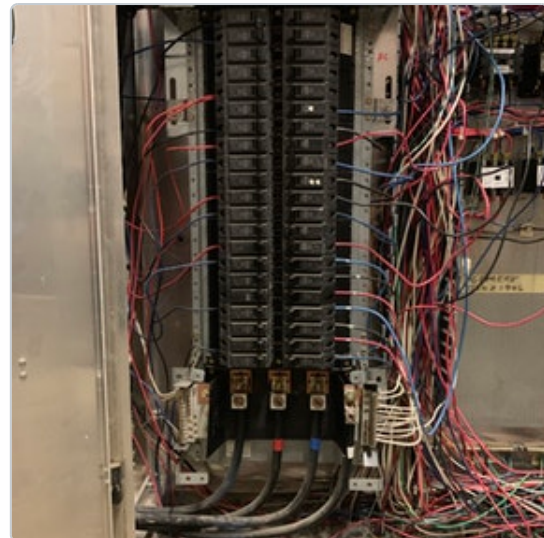
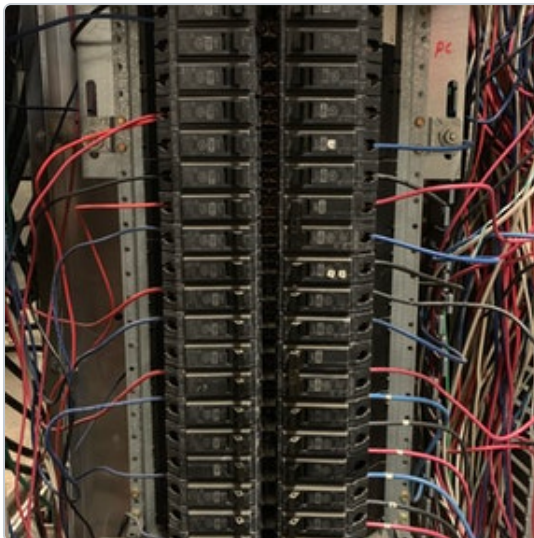
Location  **Mechanical Room**Assigned To   **Electrical Contractor**

No due date

OpenAll Media  4 photos

Phase Loads	A Phase	B Phase	C Phase	Neutral	10
Circuit	Pole	AWG	Amp	Amp	Pole
1	2	10	20	20	Spare
3	2	10	20	20	Spare
5	1	Spare	20	20	Spare
7	1	Spare	20	20	Spare
9	1	12X2	20	20	Spare
11	1	Spare	20	20	10
13	1	12	20	20	10
15	1	12	20	20	10
17	1	12	20	20	10
19	1	Spare	20	20	10
21	1	10	20	20	10
23	1	10	20	20	10
25	1	Spare	20	30	Spare
27	1	10	20	30	10
29	1	10	20	20	10
31	1	Spare	20	20	10
33	1	Spare	20	20	10
35	1	12	20	20	10
37	1	Spare	20	20	10
39	1	Spare	20	20	10
41	1	12	20	20	10

SPARE	3	4	SPARE
SPARE	5	6	SPARE
SPARE	7	8	SPARE
FLY FAN (FF-2) FOR DUMPSTER DOORS	9	10	SPARE
SPARE	11	12	STG FRZR LTS
FLY FAN (FF-1) FOR DOCK DOOR	13	14	DAIRY CLV ICE CRM FRZR LTS
RECEPT IN MECH RM	15	16	EXT LIGHTS
FLY FAN (FF-1) FOR DOCK DOOR	17	18	EXTERIOR LTS (TYPE "J")
SPARE	19	20	MEAT FRZR & COOLER LTS
VENDING (EXT FRONT WALL)	21	22	LT TSKR
VENDING (EXT FRONT WALL)	23	24	PRODUCE COOLER LTS
VENDING (EXT FRONT WALL)	25	26	FLORAL UNIT
VENDING (EXT FRONT WALL)	27	28	CHICKEN FRIED
PRIVATE LABEL VENDING (FRONT WALL)	29	30	SPARE LTS + FANS
EXTERIOR LIGHTS	31	32	SPARE LTS
EXTERIOR LIGHTS	33	34	SPARE FANS
MEN'S HAND DRYER	35	36	SPARE



Open - Deficiency

Post 38 - Panel SP Data; Schedule Incorrect



Ryan Lasker - Crescent Construction Services

4/29/2019, 11:35 AM EDT

To: Assignees, Crescent Construction Services

No schedule present.

Location Outside

Assigned To

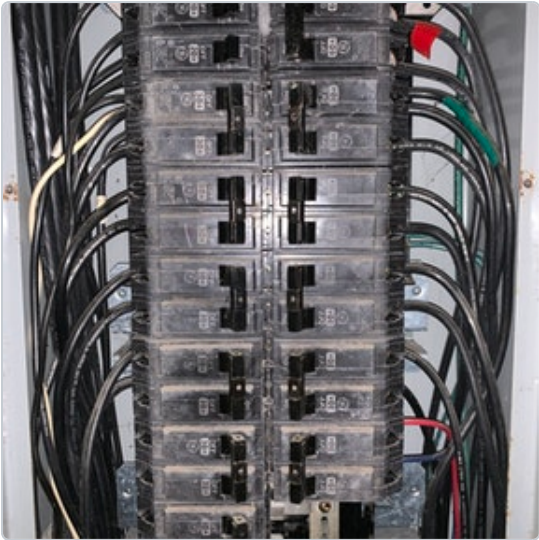
Electrical Contractor

No due date

Open

All Media 3 photos

PANEL - SP									
Phase Loads	A Phase	B Phase	C Phase	Neutral					
Circuit	Pole	31	32	33	34	35	36	37	38
1	1	8	20				40	6	2
3	1	8	20				40	6	4
5	1	10	20				40	6	6
7	2	6	30				30	6	8
9	2	6	30				30	6	10
11	2	6	30				30	6	12
13	2	6	30				30	6	14
15	2	6	30				30	6	16
17	2	6	30				30	6	18
19	2	6	30				30	8	20
21	2	6	30				30	8	22
23	2	Spare	30				30	10	24
25	2	Spare	30				30	10	26
27	2	Spare	30						Blank
29	2	Spare	30						Blank
31	Blank								Blank
33	Blank								Blank
35	Blank								Blank
37	Blank								Blank
39	Blank								Blank
41	Blank								Blank



 Open - Deficiency**Post 33 - Panel B Data: Schedule Incorrect****Ryan Lasker - Crescent Construction Services**

4/29/2019, 11:35 AM EDT

To: Assignees, Crescent Construction Services

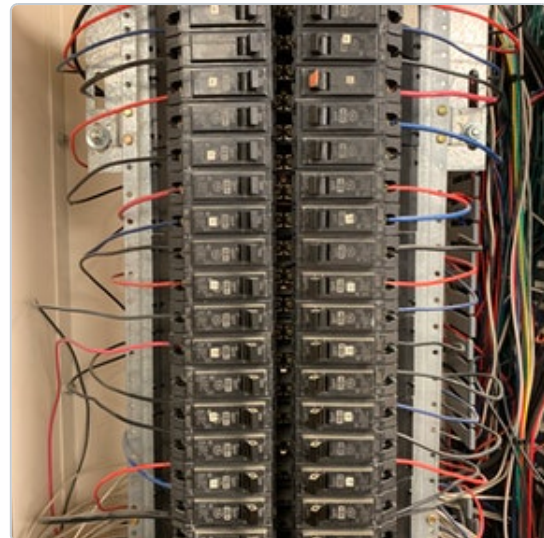
Location  **Deli Prep**Assigned To  **Electrical Contractor**

No due date

OpenAll Media  4 photos

PANEL - B									
Phase Loads	A Phase			B Phase			C Phase		
Circuit	Pole	AMG	Amp	Pole	AMG	Amp	Pole	AMG	Amp
1	1	10	15			15	12	1	2
3	1	12	15			20	12	1	4
5	1	12	15			20	12	1	6
7	1	10	20			20	12	1	8
9	1	12	20			20	10	1	10
11	1	Spare	20			20	10	1	12
13	1	12	15			20	Spare	1	14
15	1	10	15			20	12	1	16
17	1	12	20			20	10	1	18
19	1	12	15			15	10	1	20
21	1	12	15			15	12	1	22
23	1	12	20			20	12	1	24
25	1	12	20			15	12	1	26
27	1	Spare	20			20	12	1	28
29	1	12	20			15	12	1	30
31	1	12	20			15	12	1	32
33	1	12	15			15	12	1	34
35	1	10	15			15	Spare	1	36
37	3	6	60			15	12X2	1	38
39	3	6	60			20	12	1	40
41	3	6	60			20	12X2	1	42

2 DR RL FRZN DELI FAN (B2)	3	4 PRGR RLF PORT
2 DR RL FRZN DELI A/S (B2)	5	6 D/B RECEPT & CUST SVC BELL
DELI BAKERY FRZR & CLR LTS	7	8 CAKE DECORATOR TABLE RECEPT
COFFEE MAKER	9	10 DELI BAKERY LTG
SPARE	11	12 DELI BAKERY LTG
8" M2 CAKE DECORATOR FAN (A7)	13	14 BAKERY OVEN FAN (E/F/G)
8" M2 CAKE DECORATOR LTS (A7)	15	16 SPARE
SPARE	17	18 D/B HOOD LT & EXH FAN
12" S/B COLD DELI LTS (A14)	19	20 18" C2XLGE S/S COLD DELI LTS (A16)
12" S/B COLD DELI FAN (A14)	21	22 18" C2XLGE S/S COLD DELI FAN (A16)
SPARE	23	24 SPARE
5" S/S DRY BAKERY MERCHANDISER	25	26 D/B PRODUCT WRAPPER
SPARE	27	28 SPARE MANUAL SAUCERS
SPARE	29	30 BREAD SLICER
SPARE	31	32 MICROWAVE OVEN
8" C2LE S/S BAKERY FAN (A13)	33	34 SCALE W/ BUILT IN PRINTER (ON TABLE)
8" C2LE S/S BAKERY LTS (A13)	35	36 COUNTERTOP COOLER (REV. A/B/C)



Open - Deficiency

Post 35 - Panel D Data: Schedule Incorrect



Ryan Lasker - Crescent Construction Services

4/29/2019, 11:35 AM EDT

To: Assignees, Crescent Construction Services

Location Deli Prep

Assigned To

Electrical Contractor

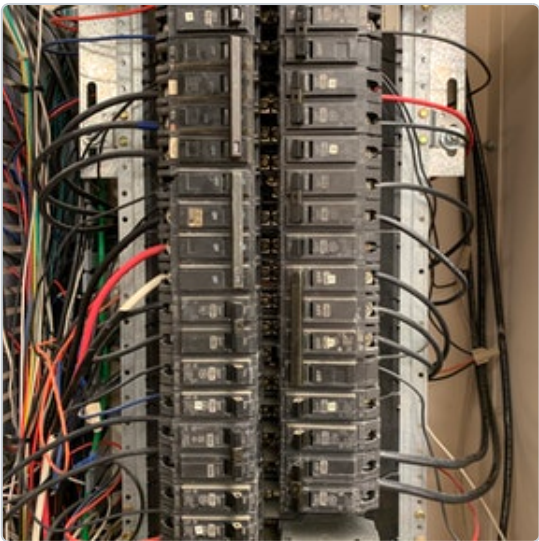
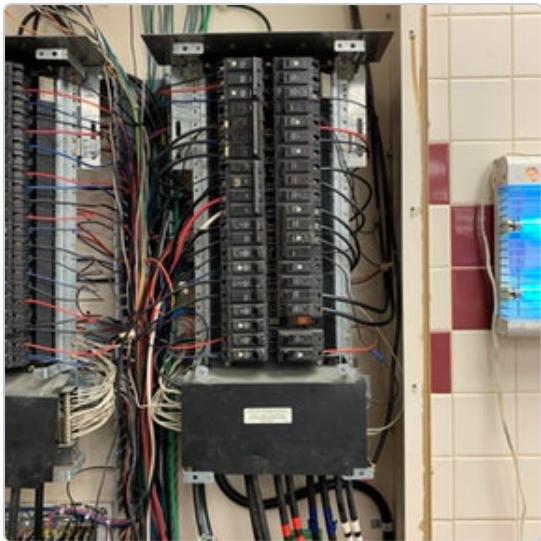
No due date

Open

All Media 4 photos

PANEL - D									
Phase Loads	A Phase	B	B Phase	20	C Phase	D	Neutral	20	
Circuit	Pole	ABG	Amp		Amp	ABG	Pole	Circuit	
1	3	12	15		20	Spare	1	2	
3	3	12	15		20	Spare	1	4	
5	3	12	15		20	12	1	6	
7	Shunt						Shunt	8	
9	3	6	50		20	10	2	10	
11	3	6	50		20	10	2	12	
13	3	6	50		20	Spare	1	14	
15	Shunt				35	8	2	16	
17	3	6	50		35	8	2	18	
19	3	6	50		20	Spare	1	20	
21	3	6	50		40	8	3	22	
23	2	8	35		40	8	3	24	
25	2	8	35		40	8	3	26	
27	1	12	20				Shunt	28	
29	1	12	20		20	Spare	1	30	
31	2	8	30		20	Spare	1	32	
33	2	8	30		30	4	2	34	
35	1	Spare	20		30	4	2	36	
37	1	12	20				Blank	38	
39	1	12	20		20	Spare	1	40	
41	1	12	20		20	12	1	42	

RACK OVEN	3	4	SPARE
	5	6	SPARE
PRESSURE FRYER	7	8	HOLDING CABINET
	9	10	4' GRM 4 HOT CASE
SHUNT TRIP SPACE	11	12	
SPARE	13	14	SPARE
SHUNT TRIP SPACE	15	16	1 DR PROOFER CABINET
SPARE FRYER	17	18	
SPARE FRYER	19	20	SPARE
1 DR PROOFER CABINET	21	22	
1 DR Proofer Cabinet	23	24	COMBI OVEN
2 DR DOUGH RETARDER	25	26	
2 DR DOUGH RETARDER	27	28	SHUNT TRIP SPACE
2 DR DOUGH RETARDER	29	30	SPARE
4' GRM 8 HOT CASE	31	32	SPARE
SPARE	33	34	
	35	36	62 GAL WATER HEATER





Open - Deficiency

Post 32 - Panel OW Data: Schedule Incorrect



Ryan Lasker - Crescent Construction Services

4/29/2019, 11:35 AM EDT

To: Assignees, Crescent Construction Services

Location

Office

Assigned To



Electrical Contractor

No due date

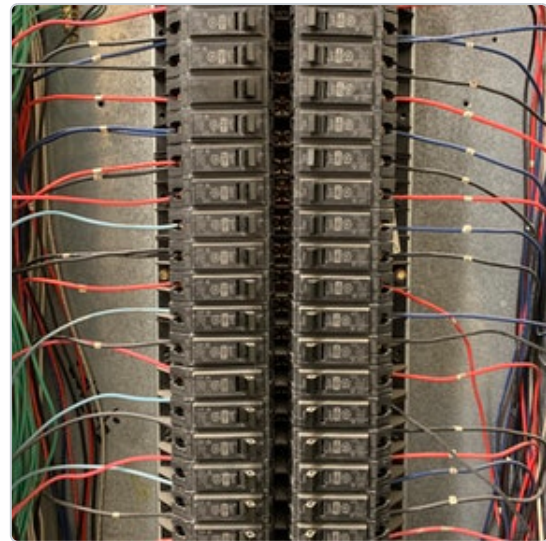
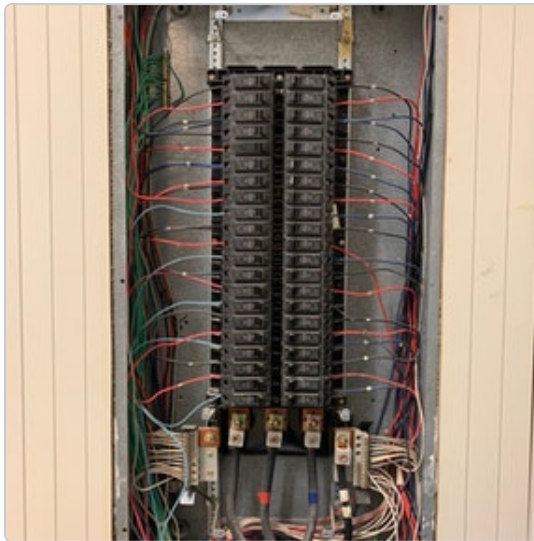
Open

All Media

4 photos

PANEL - OW									
Phase Loads	A Phase			B Phase			C Phase		
Circuit	Pole	AWG	Amp	Pole	AWG	Amp	Pole	AWG	Amp
1	1	12	20				20	12	1
3	1	12	20				20	12	1
5	1	12X2	20				20	12X2	1
7	1	12	20				20	12	1
9	1	12	20				20	12	1
11	1	12X2	20				20	12	1
13	1	12X2	20				20	12	1
15	1	12	20				20	12	1
17	1	12	20				20	12	1
19	1	12X2	20				20	12	1
21	1	12	20				20	12	1
23	1	12	20				20	12	1
25	1	12	20				20	12	1
27	1	12	20				20	12	1
29	1	12	20				20	12	1
31	1	12	20				20	12	1
33	1	12	20				20	12	1
35	1	12	20				20	12	1
37	1	12	20				20	12	1
39	1	12	20				20	12	1
41	1	12	20				20	12	1

VSU COOLER @ REG #3 & #4	3	4	OFFICE PLUG MOLD
DOOR OPENER LEFT	5	6	OFFICE RECEIPT
LOBBY QUAD DOOR OPENER LEFT	7	8	OFFICE STG RECEIPT
OFFICE STG RECEIPT	9	10	OFFICE STG RECEIPT
OFFICE STG RECEIPT	11	12	OFFICE STG RECEIPT
DOOR OPENER RIGHT	13	14	OFFICE STG RECEIPT
LOBBY QUAD DOOR OPENER RIGHT	15	16	SPRINKLER ALARM BELL
SNSRMT C DCTV PAD (REG 1,2,3,4,5) (DIRTY PWR CIR #2)	17	18	SAFE
SECURITY CAMERAS & MONITOR	19	20	CONSTAR
SPARE	21	22	SENSORMATIC POWER PACK
SNSRMT C DCTV PD (REG 6,7,8) CST SVC (DIRTY PWR CIR #2)	23	24	INTERNAL CABLE CLUTCH PORT MALL FLY FAN
SPARE	25	26	INTERNAL CABLE CLUTCH PORT MALL FLY FAN
DIRTY PWR (CIR #1) @ REG #1, 2	27	28	MONEY ORDER EQUIP
DIRTY PWR (CIR #1) @ REG #3, 4	29	30	EXTERIOR PAY PHONE PEDESTAL
DIRTY PWR (CIR #1) @ REG #5	31	32	BAGGED ICE MERCHANDISER RECEIPT
DIRTY PWR (CIR #1) @ REG #6	33	34	BAGGED ICE MERCHANDISER RECEIPT (OPT)
DIRTY PWR (CIR #1) @ REG #7	35	36	MART CART



Open - Deficiency

Post 28 - Panel CR Data: Schedule Incorrect



Ryan Lasker - Crescent Construction Services

4/29/2019, 11:35 AM EDT

To: Assignees, Crescent Construction Services

Isolated ground bar in use. Dedicated conductor for isolated ground present. Registers fed via walker duct.

Location Office

Assigned To



Electrical Contractor

No due date

Open

All Media 5 photos

PANEL - CR									
Phase Load	A Phase			B Phase			C Phase		
Circuit	Pole	AWG	Amp	Pole	AWG	Amp	Pole	AWG	Amp
1	1	12	15				15	12	1
3	1	12	15				15	12	1
5	1	12	15				15	12	1
7	1	12	15				15	12	1
9	1	Spare	15				15	Spare	1
11	1	12	15				15	12	1
13	1	Spare	15				15	12	1
15	1	12	15				15	12	1
17	1	12	15				15	12	1
19	1	12	15				15	12	1
21	1	12	15				20	Spare	1
23	1	12	15				20	Spare	1

PANEL CR	
1 REGISTER NO. 1	2 REGISTER NO. 2
3 REGISTER NO. 3	4 REGISTER NO. 4
5 REGISTER NO. 5	6 REGISTER NO. 6
7 REGISTER NO. 7	8 SPARE REG. 8
9 DELI / BAKERY REGISTER	10 REGIST. PC WORK STATION
11 WESTER UNION	12 OFFICE REGISTER
13 SPARE	14 REAR DSD TERMINAL
15 COUP. COMP. MONIT. FA PR	16 TA TERMINAL
17 MUZAK SATELLITE SYST.	18 REPORT & SIGN PRINTERS
19 COMP. CONTR. OFFICE ST.	20 OFFICE TERMINAL
21 SPARE	22 SPARE
23 SPARE	24 SPARE
25	26
27	28
29	30
31	32
33	34
35	36
37	38
39	40
41	42

